

Prestained SDS PAGE Protein Marker 6.5 – 200 kDa Liquid Mix

Specifications

Proteins

8 prestained proteins ranging from 6.5 kDa up to 200 kDa

Protein content

0.1 to 0.4 mg/ml per protein component

Buffer

50 mM Tris HCl,
2 % SDS, 10 % sucrose,
pH 6.8

Overall volume

0.5 ml, ready-to-use solution

Shelf life

12 months at -20 °C

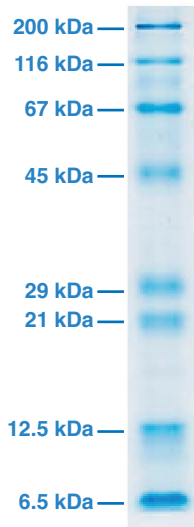
Ordering Information

Cat.-No. 39216.01 500 µl

- **Prestained marker proteins for direct visualization**
- **Monitor progress/efficiency in electrophoresis/blotting experiments**
- **Ready-to-use solution**
- **Proteins are acetylated, reduced and denatured**
- **Eight proteins ranging from 6.5 kDa up to 200 kDa**

Product Description

The SERVA Prestained Protein Marker contains eight highly purified proteins which are covalently labelled by a blue dye. Due to the label, the migration of each single protein is different than obtained with precision (unlabelled) markers and varies also significantly with the gel concentration, gel system and running conditions. For molecular weight estimation it is advisable to calibrate the running positions of stained markers by co-electrophoresis of unstained markers (cat. no. 39215).



Handling

Store the marker proteins at -20 °C. Avoid repeated thaw/freeze cycles. If necessary aliquot the marker proteins. Small aliquots may be stored at +4 °C for several days. To dissolve precipitated SDS please warm the marker solution to room temperature before loading. For mini gels use 5 μ l each lane when staining with SERVA Blue G, SERVA Blue R or similar. For silver staining load 1 μ l each lane.

Protein	Source	Size
Myosin	Bovine	200 kDa
β -Galactosidase	<i>E. coli</i> (recombinant)	116 kDa
Serum albumin	Bovine	67 kDa
Ovalbumin	Chicken egg	45 kDa
Carbonic anhydrase	Bovine erythrocytes	29 kDa
Trypsin inhibitor	Soybean	21 kDa
Lysozyme	Chicken egg	12.5 kDa
Aprotinin	Bovine lungs	6.5 kDa