

Xpress Blotting Kit

SERVA

*serving
scientists!*

For Fast and Efficient Western Blotting

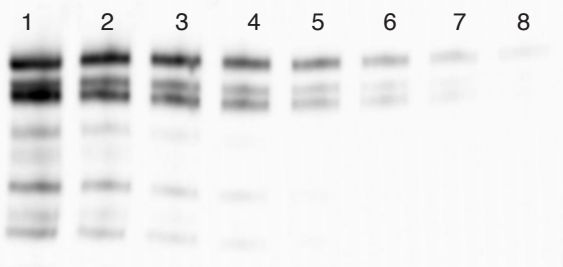
Xpress Blotting Kits for Semi-Dry Western Blotting

The newly developed SERVA Xpress Blotting Kits allow a fast and efficient semi-dry transfer of proteins in only 15 min. With the ready-to-use SERVA Xpress Blotting Buffer the efficient simultaneous semi-dry blotting of high and low molecular weight proteins is possible. The use of SERVA's newly developed Blotting Fleece instead of blotting paper enables an undisturbed transfer in a short time. The buffer system is compatible with nitrocellulose and PVDF membranes. Any Semi-Dry Blotter with a capacity of 400 mA can be used.

- Fast and efficient transfer of high and low molecular weight proteins in only 15 min
- Blotting Fleece instead of several layers of blotting paper for undisturbed transfer
- Ready-to-use – no preparing of buffer or cutting of blotting papers or membranes
- Compatible with nitrocellulose and PVDF membranes

Xpress Blot of Collagenase

Collagenase was separated on a SERVAGel™ Neutral HSE vertical mini gel. After run gel was blotted with SERVA Xpress PVDF Blotting Kit in a Hoefer Semi-Dry Blotter TX70.



Lane: 1: 5 µg Collagenase, 2: 2.5 µg Collagenase, 3: 1.25 µg Collagenase, 4: 0.625 µg Collagenase, 5: 0.313 µg Collagenase, 6: 0.156 µg Collagenase, 7: 78 ng Collagenase, 8: 39 ng Collagenase

How it works

1. Before blotting
 - Prepare 1x equilibration buffer and 1x SERVA Xpress Blotting Buffer according to manual.
 - Soak two Blotting Fleece with 20 ml 1x SERVA Xpress Blotting Buffer each. Immerse Connection Paper briefly in equilibration buffer for even wetting of the paper.
 - Wet PVDF membrane with ethanol, shortly before blotting swivel it in 1x equilibration buffer.
 - After run, remove the stacking gel and equilibrate the gel for 10 min on an orbital shaker.
2. Blotting
 - Setup blotting stack: Beginning on the anodic side of the Semi-Dry Blotter stack up one Blotting Fleece, one connection paper, the equilibrated membrane, the gel and the second Blotting Fleece.
 - Close the Semi-Dry Blotter and place a weight of 1.5 kg on it.
 - Settings: 30 V, 400 mA, 15 min

After transfer, membrane was blocked and incubated with 1:2000 anti-Collagenase from sheep as primary antibody and 1:2000 anti-goat-IgG-HRP as secondary antibody. SERVALight Vega CL HRP WB Substrate Kit was used as substrate.

Content

The kits contain reagents and material for blotting of 10 vertical mini SDS PAGE gels: 250 ml 10x SERVA Xpress Blotting Buffer, 20x Blotting Fleece sheets*, 10x Connection Paper*. Xpress NC Blotting Kit contains in addition 10x supported nitrocellulose membrane sheets*, pore size 0.22 µm and Xpress PVDF Blotting Kit 10x PVDF membrane sheets*, pore size 0.22 µm.

*size 80 mm x 85 mm

Ordering Information

Product	Quantity	Cat. no.
Xpress Blotting Kit	1 kit	42662.01
Xpress NC Blotting Kit	1 kit	42663.01
Xpress PVDF Blotting Kit	1 kit	42664.01