

Biochemicals  
Electrophoresis  
Bioseparation  
Life Sciences  
Specials

## GEL-FIX™ / NetFix™

Unique Support Material  
for Casting of Gels

### GEL-FIX™ – Film for Gels

#### Supporting film for all types of polyacrylamide and agarose gel layers

GEL-FIX™ products are sturdy supports to be incorporated during casting of gels. GEL-FIX™ is made from polyester film. Both surfaces of the film are chemically activated providing covalent binding to the polyacrylamide (GEL-FIX™ for PAG) or agarose (GEL-FIX™ for Agarose) gel layer.



GEL-FIX™ is available in sheets and rolls

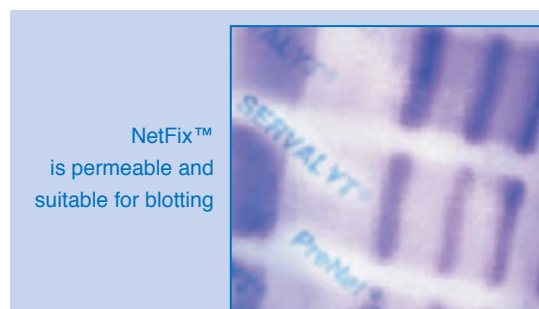
#### For safe handling and documentation

The gel will adhere to the GEL-FIX™ film not only during electrophoresis but in all subsequent staining and fixing procedures. Thus, it supports the gel layer maintaining exact shape and size (no shrinking, no swelling, no tearing). For documentation, the film-bound gel can be air-dried just as easy at room temperature to result in a transparent film, ideally suited to store the original gel in the laboratory notebook or to scan it for electronic data processing. GEL-FIX™ is transparent for UV light above 310 nm.

### NetFix™ – Net for Blotting

#### Supporting fabric for thin polyacrylamide and agarose gel layers

NetFix™ is an inert, reinforcing fabric net which serves as a permeable support for gel layers. If the agarose or polyacrylamide gel is subject to blotting after electrophoresis we recommend NetFix™ for Agarose resp. NetFix™ for PAG. The polyester fabric is activated to bind polyacrylamide or agarose, respectively.



NetFix™ is permeable and suitable for blotting

#### For easy blotting transfer

If a thin gel is to be removed after electrophoresis and transferred onto the membrane for blotting transfer, it can easily get damaged (torn) because it is so thin. Usage of GEL-FIX™ is not recommended for blotting as it must be removed from the gel physically before blotting. Net-Fix™ is the ideal choice. It is cast into the gel and will stabilize the gel layer but not interfere in electrophoresis or blotting. Net-Fix™ allows convenient, safe handling and will stay „in shape“.

- Can be cut into every desired size
- Is stable to temperatures up to 110 °C
- Long shelf life (24 months)
- Customized formats available

# TECHNICAL NOTES

## Electrophoresis

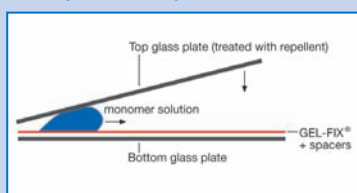
## GEL-FIX™/NetFix™

Unique Support Material for Casting of Gels

### How to prepare gels using GEL-FIX™/NetFix™

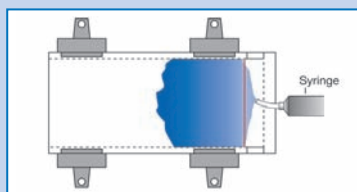
Different techniques are applicable depending on the thickness of the gel to be cast (see figures below). Detailed protocols for casting horizontal gels are available, see also [www.serva.de](http://www.serva.de).

#### I. Flap Technique:



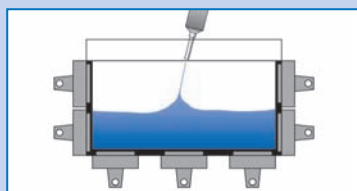
Casting horizontal gels up to 0.5 mm

#### II. Capillary Technique:



Casting horizontal gels between 0.5 and 1.0 mm

#### III. Cuvette Technique:



Casting horizontal gels between 0.5 and 1.5 mm

### Ordering Information GEL-FIX™/NetFix™

Product	Size	Quantity	Cat. No.
GEL-FIX™ for PAG	245 x 125 mm	36 sheets	42980.01
	260 x 125 mm	36 sheets	42999.01
	260 x 203 mm	36 sheets	42961.01
	265 x 125 mm	36 sheets	42993.01
	265 x 193 mm	36 sheets	42983.01
	265 x 213 mm	36 sheets	42939.01
	50 m x 125 mm	1 roll	42966.01
	50 m x 193 mm	1 roll	42968.01
GEL-FIX™ for Agarose	50 m x 233 mm	1 roll	42934.01
	200 m x 193 mm	1 roll	42996.01
	80 x 125 mm	36 sheets	42998.01
	84 x 94 mm	36 sheets	42931.01
	125 x 125 mm	36 sheets	42997.01
	258 x 125 mm	36 sheets	42982.01
	265 x 125 mm	36 sheets	42981.01
265 x 150 mm	36 sheets	42955.01	
50 m x 125 mm	1 roll	42932.01	
NetFix™ for PAG	265 x 125 mm	36 sheets	42775.01
NetFix™ for Agarose	265 x 125 mm	36 sheets	42684.01
Polyester Sheet, untreated, for NetFix™, 0.18 mm thick	260 x 150 mm	36 sheets	42917.01
GEL-FIX™ for Covers*	245 x 125 mm	36 sheets	42975.01
	260 x 125 mm	36 sheets	42973.01
	260 x 203 mm	36 sheets	42971.01
	265 x 125 mm	36 sheets	42970.01
	265 x 193 mm	36 sheets	42969.01
	280 x 125 mm	36 sheets	42995.01
	50 m x 125 mm	1 roll	42983.01

\* GEL-FIX™ for Covers is used to protect the surface of a prepared gel from drying out but will not stick to the gel surface.

### Applications of GEL-FIX™/NetFix™ Supports

Casting of Gels	Native PAGE	IEF, PAGE	IEF, Agarose	SDS PAGE	Nucleic Acid El.	Blotting, PAGE gels	Blotting, Agarose gels
GEL-FIX™ for PAG	+	+		+	+		
GEL-FIX™ for Agarose			+		+		
GEL-FIX™ for Covers	+	+	+	+	+	+	+
NetFix™ for PAG	+	+		+	+	+	
NetFix™ for Agarose			+		+		+

**SERVA**  
Electrophoresis

SERVA Electrophoresis GmbH

Carl-Benz-Str. 7 · D-69115 Heidelberg · Germany

Phone: +49 (0) 6221 13840-0 · Fax: +49 (0) 6221 13840-10

E-Mail: [info@serva.de](mailto:info@serva.de) · Internet: [www.serva.de](http://www.serva.de)

